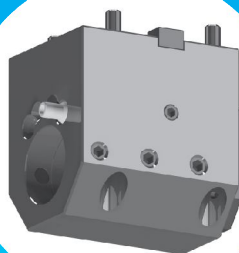
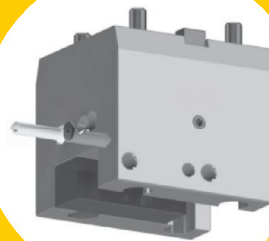
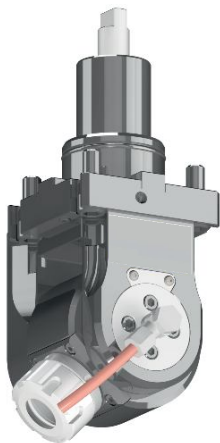
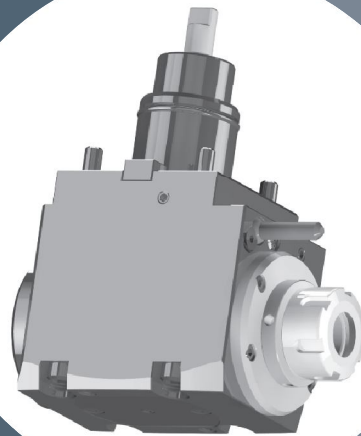
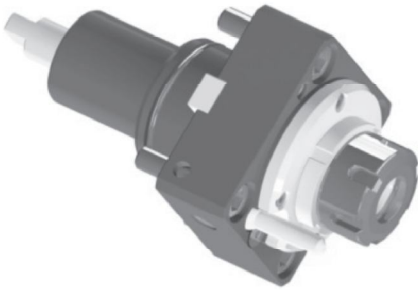


EuroDrive

Made In Europe

Live Tools Product Catalogue





EuroDrive provides its customers high quality Driven Tools and Static Tools for CNC lathes and Machining Centres. We offer a complete range of Driven Tool Holders for all major machines including Haas, Doosan, Okuma, Mazak, Mori Seiki, Jyoti, BFW and LMW.

EuroDrive delivers products that meet the highest standards of Performance, Quality and Service. All our products are manufactured in Europe in a modern and state of the art production facility to the highest quality standards of ISO 9001.

EuroDrive develops and produces products to meet our customers high technical requirements and specifications. Our team of highly trained & skilled technicians and application engineers collaborate with our customers to develop unique solutions.

EuroDrive produces Tool Holders for CNC lathes with axial, radial and adjustable style for BMT, VDI and BOT Turrets. Static Tools are offered for Turning, Boring, Face Grooving, Cut Off and Bar Pulling operations.

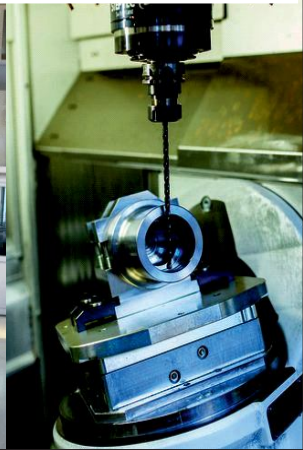
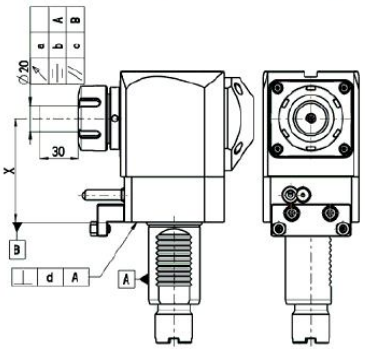
EuroDrive heads can be serviced or sent in for periodic maintenance to any one of our Authorized Service Centres located in the markets we serve.



Management System
ISO 9001:2015



	PART NAME :	RGT140251321180UD	April 17, 2019	12:13
	REV NUMBER :	SER NUMBER :	9002	STATS COUNT : 1



CONTENTS

Specifications

Ordering System	2
Tool Orientation	8

BMT Turret Tools

BMT 45 Live	12
BMT 45 Static	14
BMT 55 Live	16
BMT Static	19
BMT 65 Live	21
BMT 65 Static	24
HASS BOT Static	26
BMT 44 Nakamura	31
BMT 55 Nakamura	36
BMT 65 Nakamura	41
BMT 60 OKUMA	45
BMT 60 Mori Seiki	51

VDI Turret Tools

Sauter DIN 5482	56
Sauter DIN 5480	59
Diplomatic DIN 1809	63
Baruffaldi / TOEM	67
HAAS Turret	71
OKUMA	76
VDI Static DIN 69880	79

Accessories

85


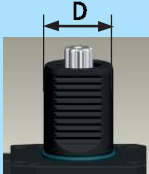















Operating instructions

86




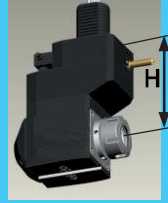


Maintenance Data Sheet

90

LIVE TOOLHOLDER SYMBOLIZATION

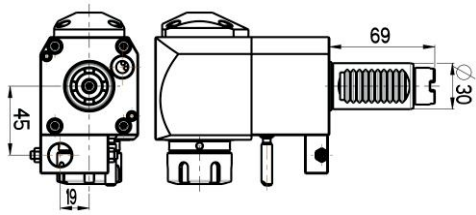
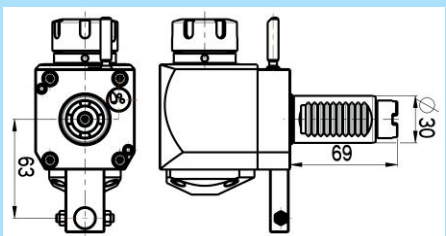
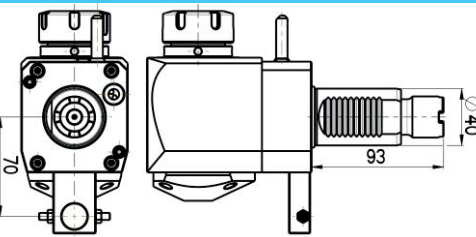
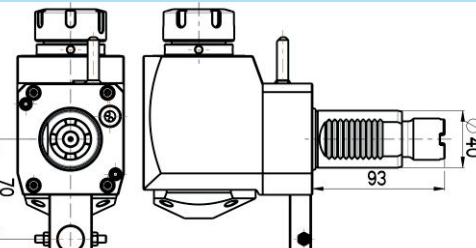
EDL	TURRET DATA		PRODUCT TYPE	COUPLING TYPE	TOOL GRIP	
	TYPE	D(mm)			TYPE	DIMENSION
EDL	1	40	2	5	1	32
	1 - VDI 		1 - STRAIGHT  2 - ANGULAR 	1 - DIN 5482  2 - DIN 1809  3 - DIN 5480 	1 - COLLET  2 - WELDON  3 - SHELL MILL ARBOR 	SIZE COLLET 16/25/ 32 /40 WELDON upon request SHELL MILL ARBOR upon request
	2 - BMT 		3 - OFFSET STRAIGHT  4 - OFFSET ANGULAR  5 - VARIABLE ANGLE 	4 - TOEM  5 - STEPPED 		

Example: EDL1- 40/251-32/2.2-80A

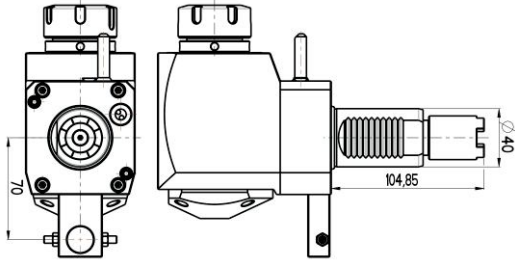
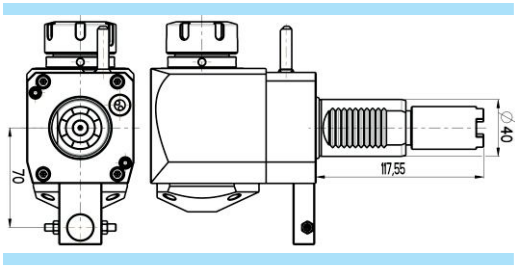
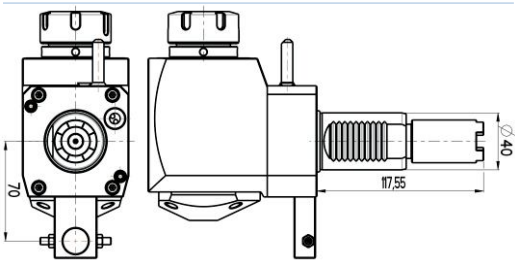
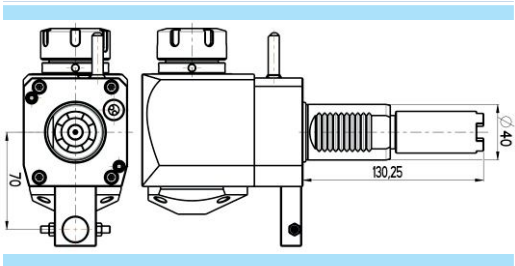
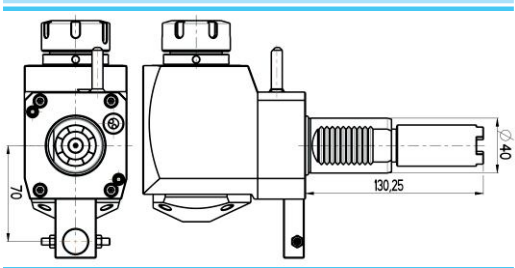
INTERNAL COOLING	ONLY FOR ANGULAR OFFSET STRAIGHT OFFSET ANGULAR		DETAILS CODE
	DIRECTION	H (mm)	
2	2	80	A
1 - NO 2 - YES (max 20 bar)	1 - RIGHT 		See details code table
	2 - LEFT 		Please check the pages no. 3-4
	3 - RIGHT&LEFT 		

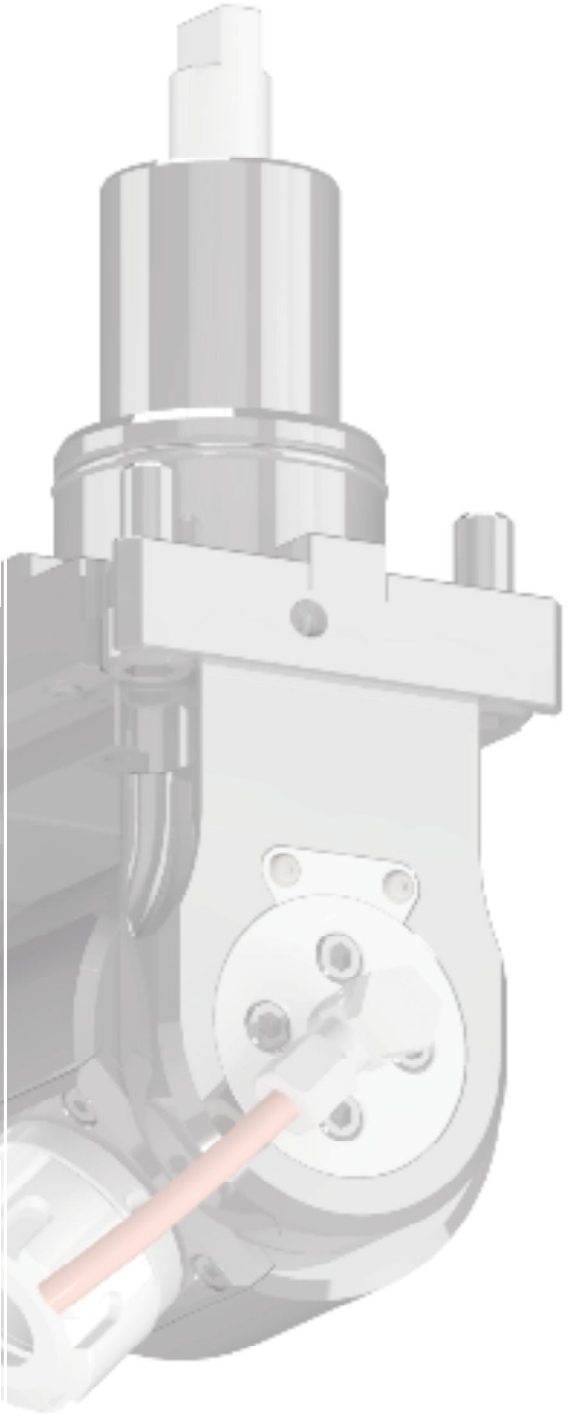


Details code		Technical details		Details code		Technical details	
JB	VDI40 OKUMA			C	VDI30 DIN1809		
JC	VDI40 OKUMA			D	VDI30 DIN1809		
JD	VDI40 OKUMA			S	VDI40 (short)		
JE	VDI40 OKUMA			D	VDI40 TOEM		
B	VDI30 DIN1809			A	VDI40 HAAS		

Details code		Technical details	
(1:2)	Ratio 1:2	$n_1=6000\text{r/min (in)}$ $n_2=12000\text{r/min (out)}$	
(2:1)	Ratio 2:1	$n_2=6000\text{r/min (in)}$ $n_1=3000\text{r/min (out)}$	
JA	VDI30 OKUMA		
JB	VDI30 OKUMA		
JA	VDI40 OKUMA		
JAS	VDI40 OKUMA same direction (in-out)		

Details code	Technical details		Details code	Technical details	
(JA) BMT60 OKUMA			(DO) BMT65 DOOSAN		
(JB) BMT60 OKUMA			(NT) BMT44 NAKAMURA -TOME		
(MS) BMT60 MORI-SEIKI			(NT) BMT55 NAKAMURA TOME		
(DO) BMT45 DOOSAN			(NT) BMT65 NAKAMURA -TOME		
(DO) BMT55 DOOSAN					

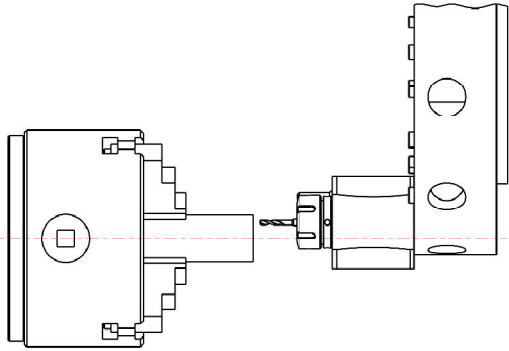
Details code	Technical details	
AS	VDI40 HAAS same direction (in-out)	
B	VDI40 HAAS	
BS	VDI40 HAAS same direction (in-out)	
C	VDI40 HAAS	
CS	VDI40 HAAS same direction (in-out)	



DIN 5482 Operations with VDI Disk-type turret

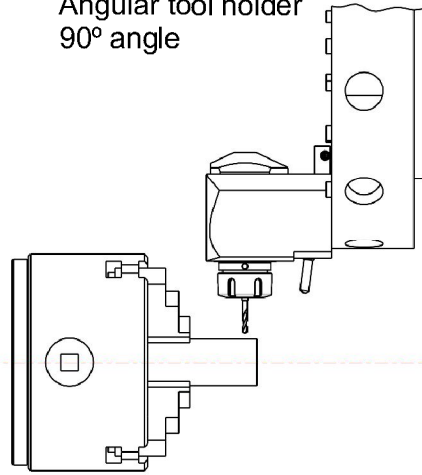
Axial operation

Straight tool holder

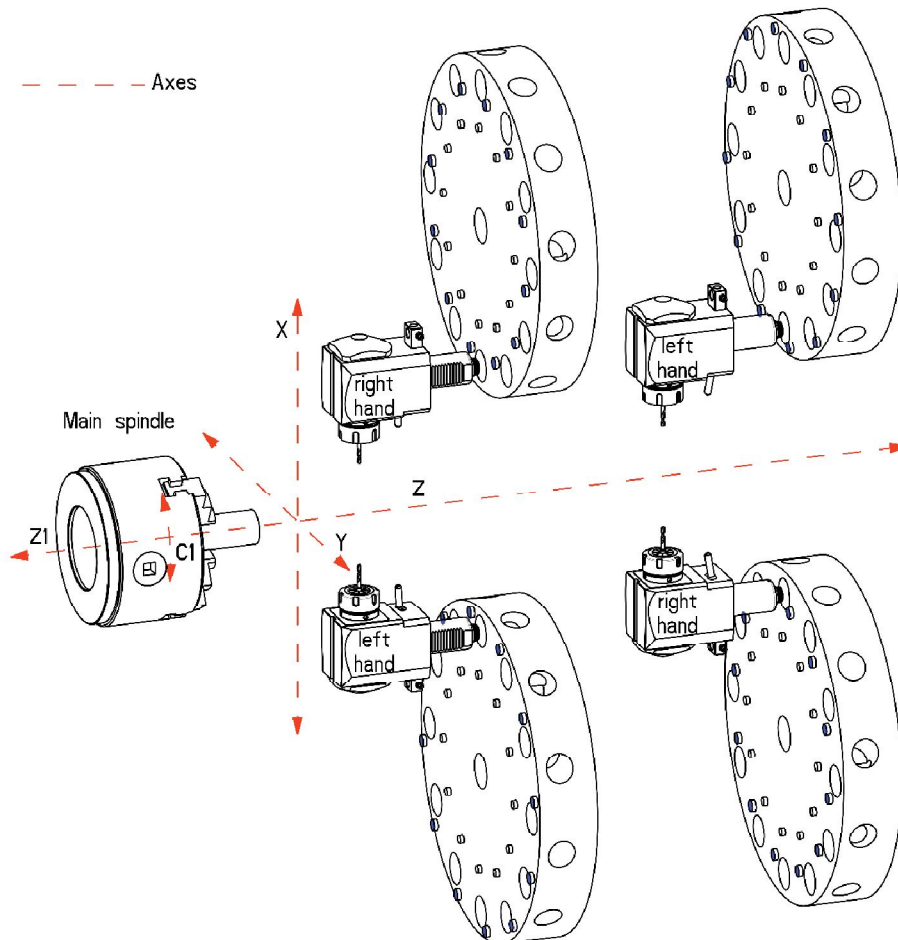


Radial operation

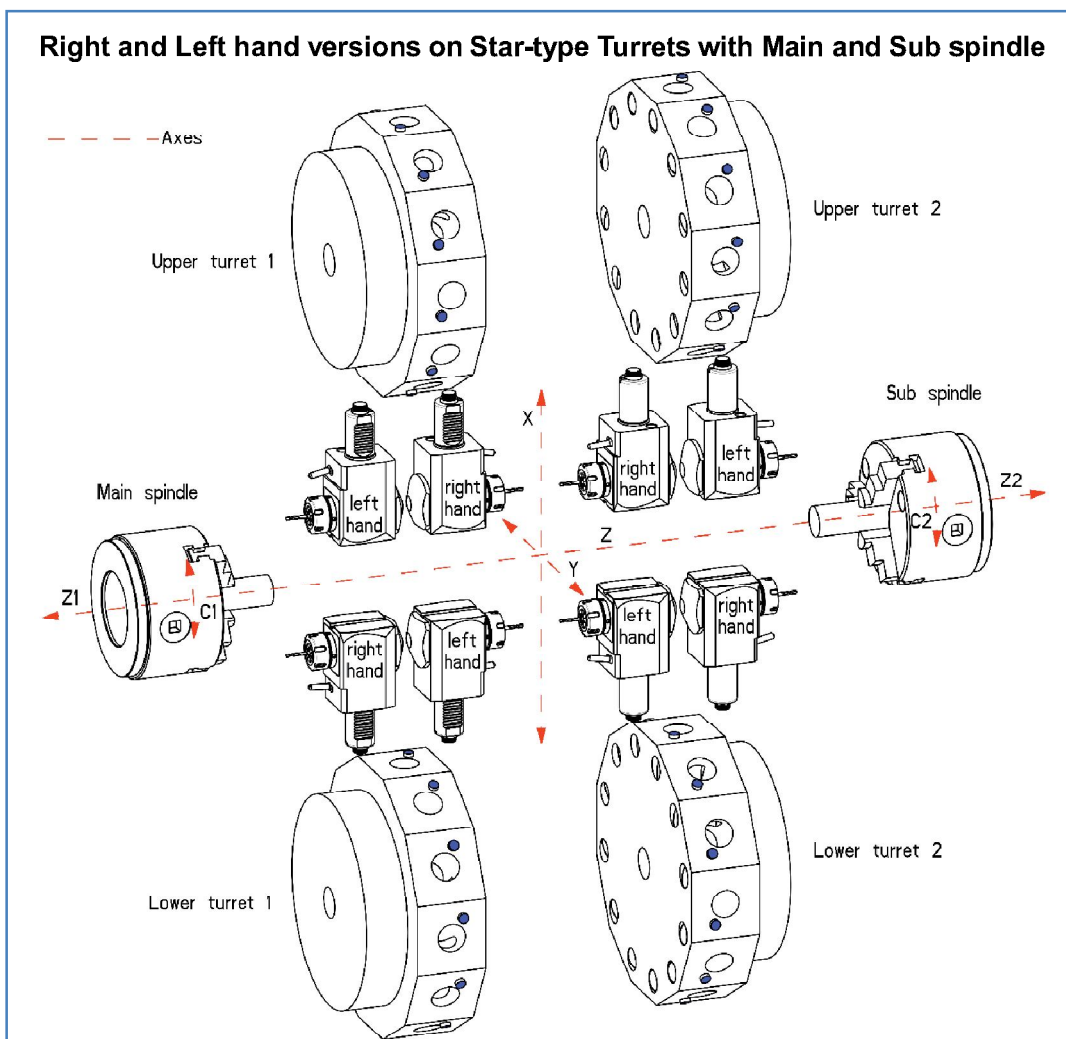
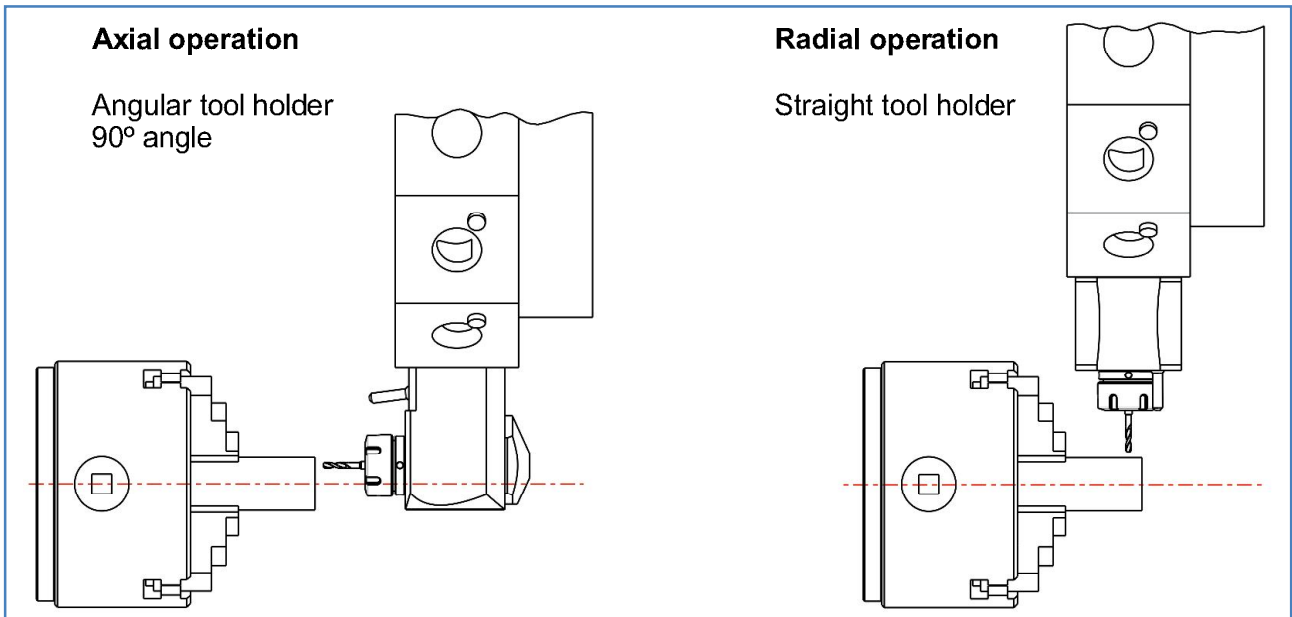
Angular tool holder
90° angle

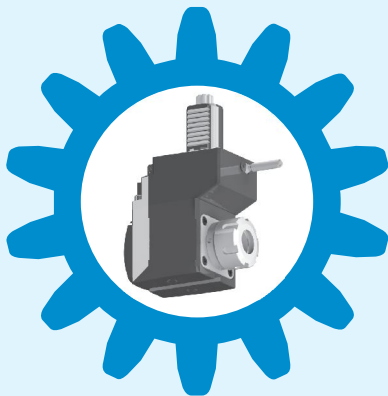
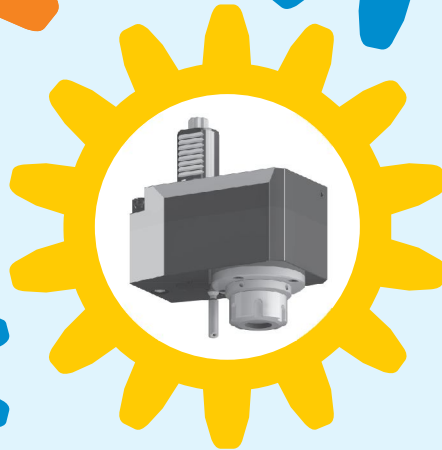
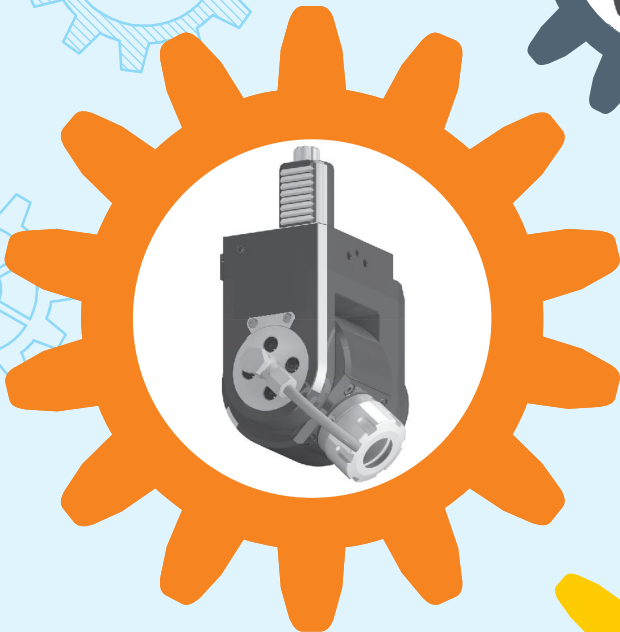
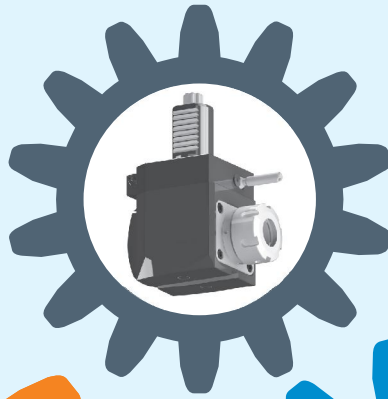


Right and Left hand versions on Disk-type Turrets



DIN 5480 Operations with VDI Star-type turret

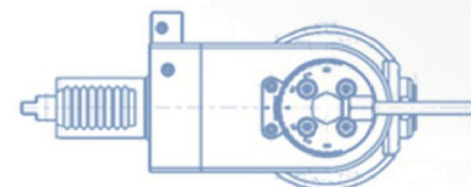
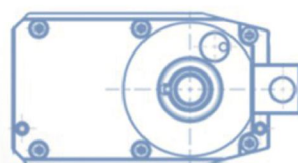
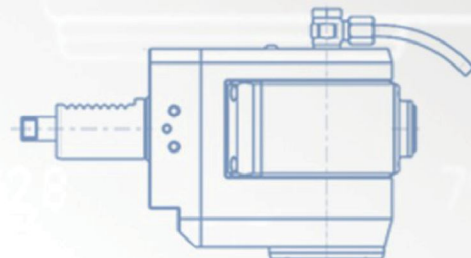
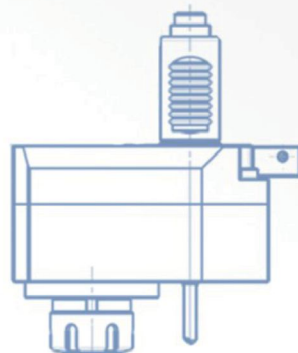
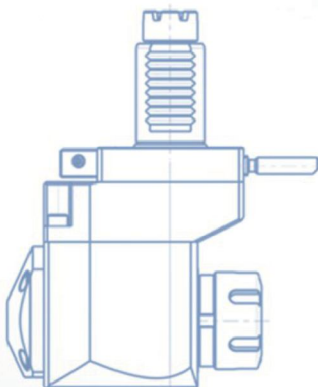
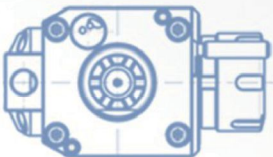
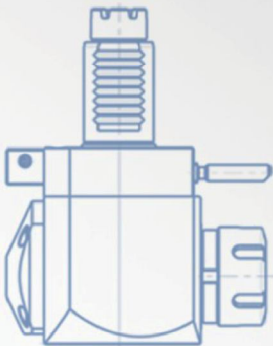




VDI TURRET TOOLHOLDERS

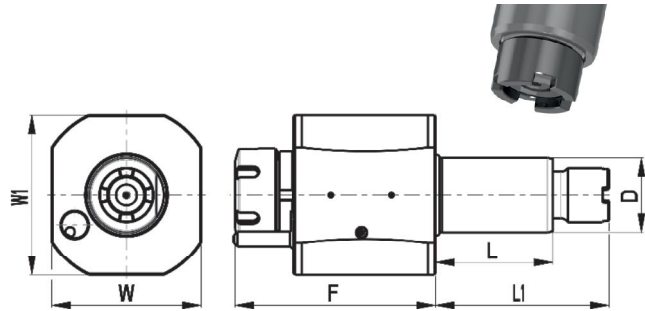
Suitable for:

AKIRA SEIKI
BARUFFALDI / TOEM
Biglia
Boehringer
DOOSAN
DUPLOMATIC DIN 1809
EMCO
Gildemeister/ DMG MORI
HAAS
Hardinge
HURCO
Hwacheon
Hyundai WIA
INDEX
Jyoti
Mazak
Monforts
Mori Seiki
NILES
OKUMA
SAUTER DIN 5480
SAUTER DIN 5482
Schaublin
Spinner
Traub
WFL



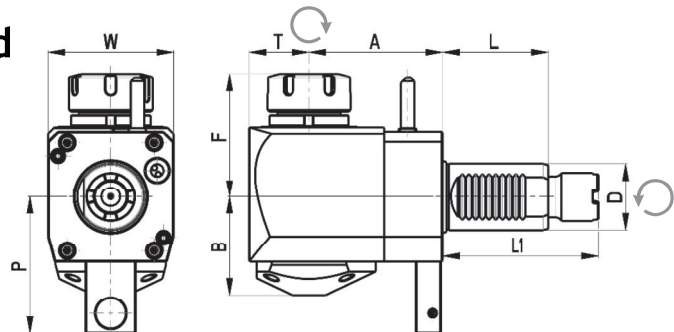
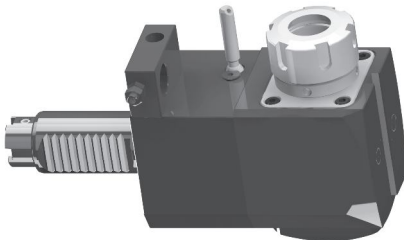
OKUMA

Straight drilling and milling head



Code	D	Tool grip	IC	F	L	L1	W	W1	Torque [Nm]	Speed [rpm]	Ratio	P [bar]
EDL1-30/151-25/1JA	30	ER25	no	89	55	69	64	68	28	6000	1:1	-
EDL1-30/151-25/2JA	30	ER25	yes	89	55	69	64	68	28	6000	1:1	20
EDL1-40/151-25/1JA	40	ER25	no	105	64	93	80	86	50	6000	1:1	-
EDL1-40/151-25/2JA	40	ER25	yes	105	64	93	80	86	50	6000	1:1	20
EDL1-40/151-32/1JA	40	ER32	no	108	64	93	80	86	50	6000	1:1	-
EDL1-40/151-32/2JA	40	ER32	yes	108	64	93	80	86	50	6000	1:1	20
EDL1-40/151-25/1JB	40	ER25	no	105	64	101	80	86	50	6000	1:1	-
EDL1-40/151-25/2JB	40	ER25	yes	105	64	101	80	86	50	6000	1:1	20
EDL1-40/151-32/1JB	40	ER32	no	108	64	101	80	86	50	6000	1:1	-
EDL1-40/151-32/2JB	40	ER32	yes	108	64	101	80	86	50	6000	1:1	20

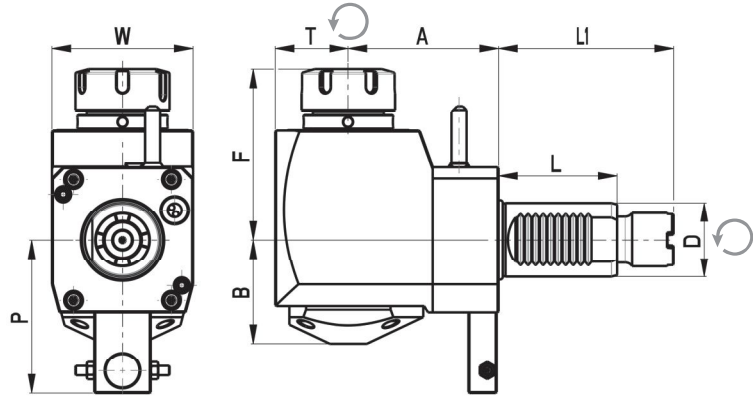
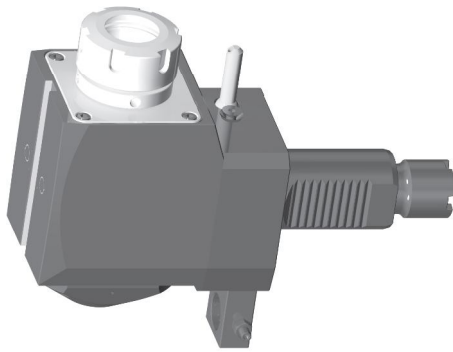
Angular drilling and milling head



Code	D	Tool grip	IC	Direction	A	B	F	L	L1	P	T	W	Torque [Nm]	Speed [rpm]	Ratio	P [bar]
EDL1-30/251-25/1.1-85JA	30	ER25	no	right	85	48	64	55	69	-	29	64	28	6000	1:1	-
EDL1-30/251-25/2.1-85JA	30	ER25	yes	right	85	51	64	55	69	-	29	64	28	6000	1:1	20
EDL1-30/251-25/2.2-55JB	30	ER25	no	left	55	48	64	55	69	72	29	64	28	6000	1:1	-
EDL1-30/251-25/2.2-55JB	30	ER25	yes	left	55	51	64	55	69	72	29	64	28	6000	1:1	20
EDL1-40/251-25/1.2-80JA	40	ER25	no	left	80	59	70	64	93	82	36	75	50	6000	1:1	-
EDL1-40/251-25/2.2-80JA	40	ER25	yes	left	80	62	70	64	93	82	36	75	50	6000	1:1	20
EDL1-40/251-32/1.2-80JA	40	ER32	no	left	80	59	74	64	93	82	36	75	50	6000	1:1	-
EDL1-40/251-32/2.2-80JA	40	ER32	yes	left	80	62	74	64	93	82	36	75	50	6000	1:1	20
EDL1-40/251-25/1.2-80JB	40	ER25	no	left	80	59	70	64	101	82	36	75	50	6000	1:1	-
EDL1-40/251-25/2.2-80JB	40	ER25	yes	left	80	62	70	64	101	82	36	75	50	6000	1:1	20
EDL1-40/251-32/1.2-80JB	40	ER32	no	left	80	59	74	64	101	82	36	75	50	6000	1:1	-
EDL1-40/251-32/2.2-80JB	40	ER32	yes	left	80	62	74	64	101	82	36	75	50	6000	1:1	20
EDL1-40/251-25/1.1-80JD	40	ER25	no	right	80	59	70	64	93	-	36	75	50	6000	1:1	-
EDL1-40/251-25/2.1-80JD	40	ER25	yes	right	80	62	70	64	93	-	36	75	50	6000	1:1	20
EDL1-40/251-32/1.1-80JD	40	ER32	no	right	80	59	74	64	93	-	36	75	50	6000	1:1	-
EDL1-40/251-32/2.1-80JD	40	ER32	yes	right	80	62	74	64	93	-	36	75	50	6000	1:1	20

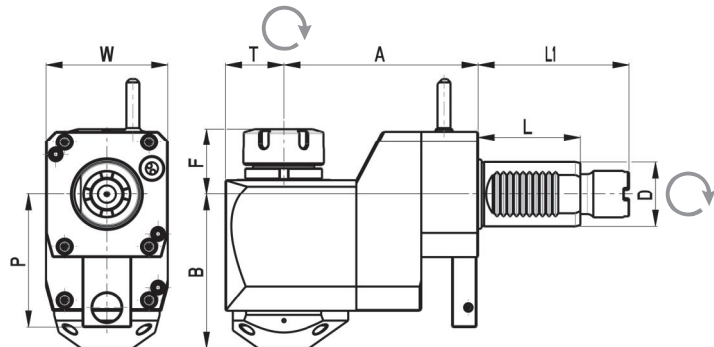
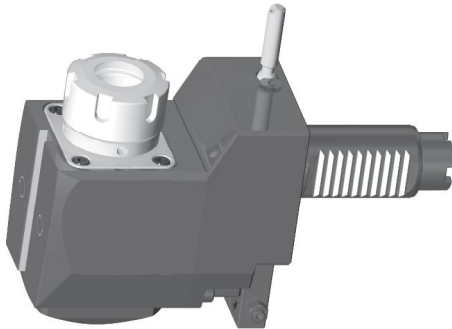
OKUMA

Angular drilling and milling head - SAME DIRECTION



Code	D	Tool grip	IC	Direction	A	B	F	L	L1	P	T	W	Torque [Nm]	Speed [rpm]	Ratio	P [bar]
EDL1-40/251-32/1.2-80JAS	40	ER32	no	left	80	56	91	63	93	82	36	75	50	6000	1:1	-
EDL1-40/251-32/2.2-80JAS	40	ER32	yes	left	80	56	91	63	93	82	36	75	50	6000	1:1	-

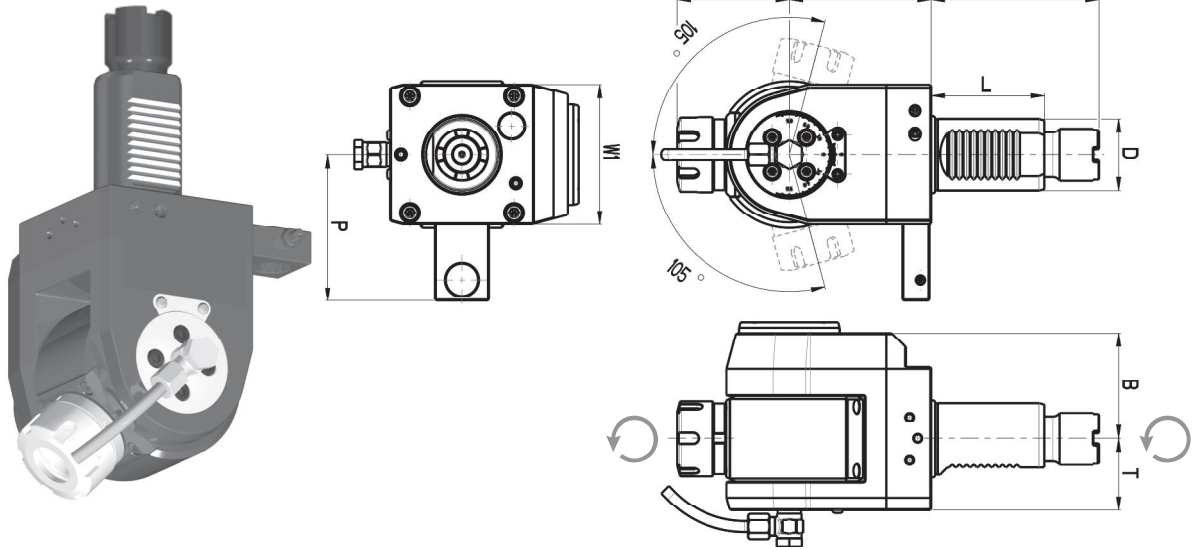
Offset angular drilling and milling head



Code	D	Tool grip	IC	Direction	A	B	F	L	L1	P	T	W	Torque [Nm]	Speed [rpm]	Ratio	P [bar]
EDL1-30/451-25/1.2-75JB	30	ER25	no	left	75	71	40	55	69	72	29	64	28	6000	1:1	-
EDL1-30/451-25/2.2-75JB	30	ER25	yes	left	75	74	40	55	69	72	29	64	28	6000	1:1	20
EDL1-40/451-25/1.2-120JA	40	ER25	no	left	120	92	37	64	93	82	36	75	50	6000	1:1	-
EDL1-40/451-25/2.2-120JA	40	ER25	yes	left	120	95	37	64	93	82	36	75	50	6000	1:1	20
EDL1-40/451-32/1.2-120JA	40	ER32	no	left	120	92	41	64	93	82	36	75	50	6000	1:1	-
EDL1-40/451-32/2.2-120JA	40	ER32	yes	left	120	95	41	64	93	82	36	75	50	6000	1:1	20
EDL1-40/451-25/1.2-120JB	40	ER25	no	left	120	92	37	64	101	82	36	75	50	6000	1:1	-
EDL1-40/451-25/2.2-120JB	40	ER25	yes	left	120	95	37	64	101	82	36	75	50	6000	1:1	20
EDL1-40/451-32/1.2-120JB	40	ER32	no	left	120	92	41	64	101	82	36	75	50	6000	1:1	-
EDL1-40/451-32/2.2-120JB	40	ER32	yes	left	120	95	41	64	101	82	36	75	50	6000	1:1	20

OKUMA

Variable angular drilling and milling head



Code	D	Tool grip	IC	Direction	A	B	F	L	L1	P	T	W1	Torque [Nm]	Speed [rpm]	Ratio	P [bar]
EDL1-30/551-16.1JA	30	ER16	no	right/left	79	59	43	55	69	57	40	64	16	6000	1:1	-
EDL1-30/551-16.2JA	30	ER16	yes	right/left	86	59	43	55	69	57	40	64	16	6000	1:1	20
EDL1-40/551-25.1JA	40	ER25	no	right/left	79	59	64	64	93	82	40	78	16	6000	1:1	-
EDL1-40/551-25.2JA	40	ER25	yes	right/left	86	59	64	64	93	82	40	78	16	6000	1:1	20
EDL1-40/551-25.1JB	40	ER25	no	right/left	79	59	64	64	101	82	40	78	16	6000	1:1	-
EDL1-40/551-25.2JB	40	ER25	yes	right/left	86	59	64	64	101	82	40	78	16	6000	1:1	20



SAMTEC

Your Partner For Innovative Tooling Solutions

Samtec Tools & Accessories Pvt. Ltd.

Survey No.33/3, Behind MITCON Institute, Balewadi,

PUNE-411 045, INDIA

Mobile: +91 9325409714,

Tel No: +91 9175105689, 7507205689

web.: www.samtectools.com

ashish@samtectools.com

info@samtectools.com

Distributed by: